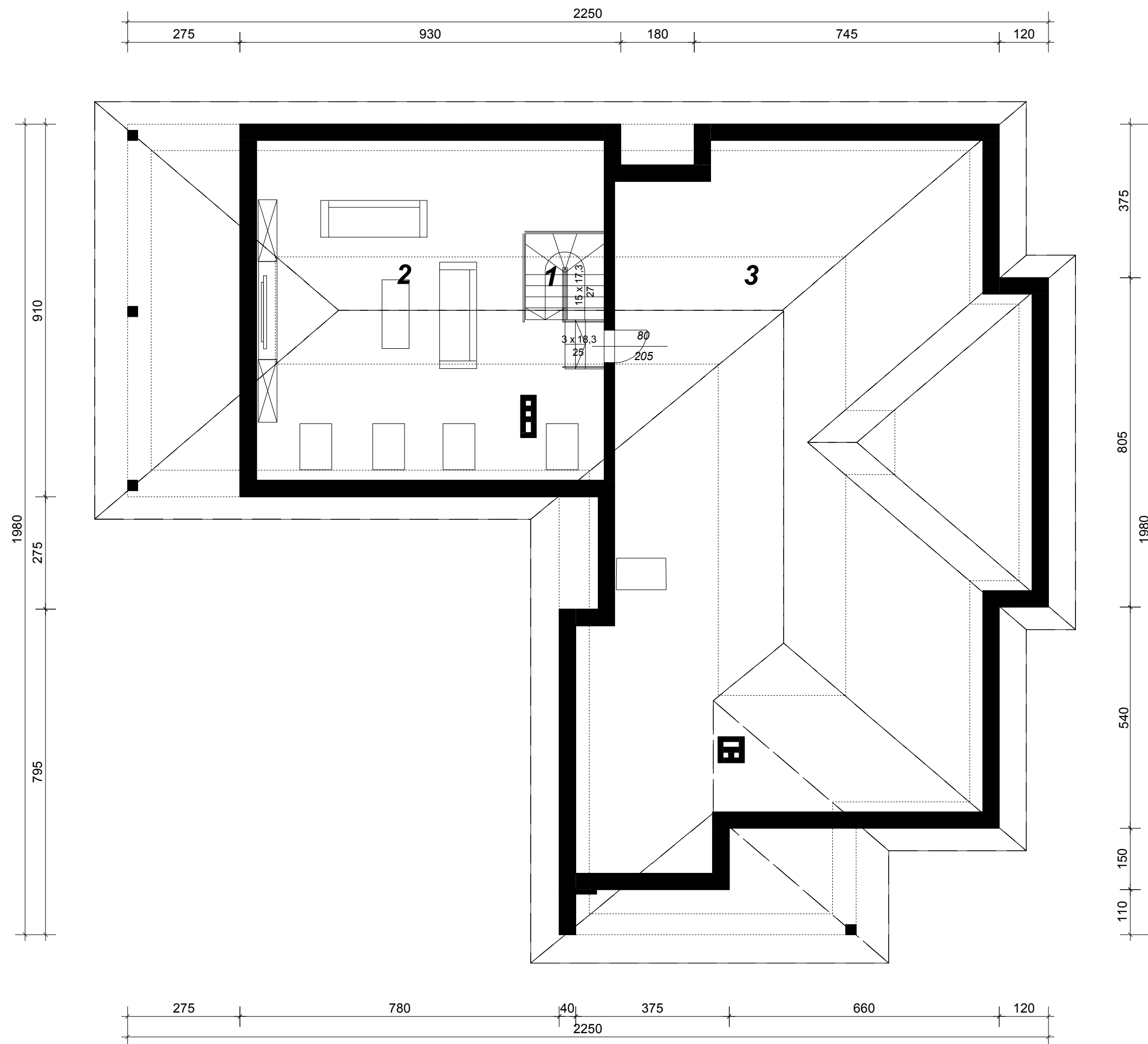


# Rzut poddasza



## Opis pomieszczeń:

1. kl. schodowa  
4.04 m<sup>2</sup>
2. pokój rekreacyjny  
66.03 m<sup>2</sup>  
40.60 m<sup>2</sup>
3. strych  
162.89 m<sup>2</sup>  
65.72 m<sup>2</sup>